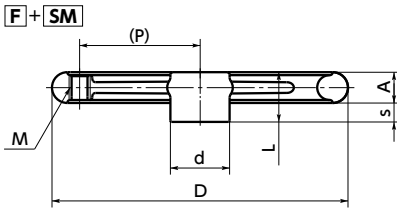
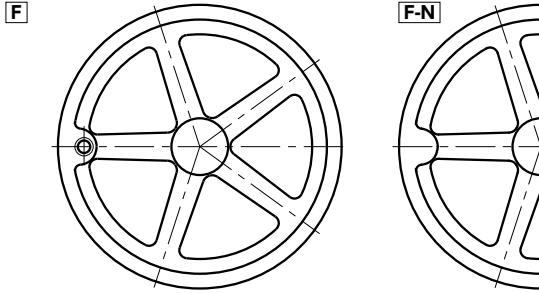


F Flat Handwheels



Shaft bore process required



- Products with/without grip mounting holes can be selected by the end symbol of the part number.
 - F** — With grip mounting hole
 - F-N** — Without grip mounting hole
- There is no grip supplied with this product. Order a grip separately. → P.xxxx

Material/Finish



	F
Main body	FC200 Chrome Plating

Unit : mm

Part Number With Grip Mounting Holes	M (Coarse)		P	Part Number Without Grip Mounting Holes	D	A	s	d	L	Number of Spokes	Mass (g)
	Nominal of Thread	Pitch									
F-80	M5	0.8	27	F-80-N	80	14	10	24	24	3	430
F-100	M5	0.8	35.5	F-100-N	100	15	10	30	25	3	580
F-125	M6	1	46.5	F-125-N	125	16	12	33	28	3	810
F-140	M6	1	55	F-140-N	140	17	13	35	30	3	1360
F-160	M8	1.25	62	F-160-N	160	18	14	37	32	3	1410
F-200	M10	1.5	80	F-200-N	200	24	17	43	41	3	2330
F-250	M10	1.5	99	F-250-N	250	25	17	50	42	5	4030
F-315	M12	1.75	129	F-315-N	315	28	21	60	49	5	7150

Recommended applicable grip

Part Number	Recommended Applicable Grip*1	
	Plated Revolving Grip RM	Plated Fixing Grip SM
F-80		SM-5
F-100		SM-5
F-125	RM-6	SM-6
F-140	RM-6	SM-6
F-160	RM-8	SM-8
F-200	RM-10	SM-10
F-250	RM-10	SM-10
F-315	RM-12	SM-12

*1 : If a revolving grip other than the recommended applicable grip is used, the grip may not rotate.

Part number specification

F - 80 - N
 Product Code

Cleanroom Wash & Packaging → P.xxxx	Vibration Resistant → P.xxxx	Laser Marking → P.xxxx	Modification of Shaft Hole Diameter → P.xxxx
Not Available	Not Available	Not Available	Available / Add'l charge