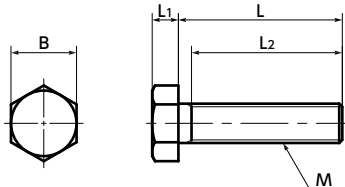




SPE-H Plastic Screw - Hex Head Screws - PEEK

Heat-resistance Chemical-proof



Material/Finish



	SPE-H
Main body	PEEK (Polyether Ether Ketone) (Light Brown)
Heat Resistance Temperature*1	260°C

*1: This is the value for the plastic material. The maximum operating temperature of the product changes with performance conditions such as tightening torque.

⚠️ Precautions for Use

Because a cumulative pitch difference is created when PEEK screws are manufactured, use these screws with nuts. If a nut is not used, use a 20 mm or less fit with female thread.

- PEEK is a thermoplastic super-engineering plastic with excellent physical and chemical properties.
- These screws have excellent chemical resistance. They are mostly unaffected by chemicals excluding concentrate sulfuric acid, concentrate nitric acid, and concentrate hydrofluoric acid.
- These screws have excellent heat resistance, water resistance, and high heat resistance strength.
- These screws have excellent abrasion, shock, and fatigue resistance.
- They have high incombustibility that meets V-0 of UL 94.
- The properties and precautions of plastic screws → P.xxxx

Application

FPD production equipment / Semiconductor devices / Printed circuit board etching devices / Metallic surface treatment equipment and facilities / Chemical plants / Transformers / Electrical and electronic equipment / Hot water pumps / Chemical pumps

Unit : mm

Part Number	M (Coarse) ❶		L ❷	B	L1	L2*1	Tension*2 Rupture Load (N)	Torsional*2 Torque (N·m)	Mass (g)	Qty per pack
	Nominal of Thread	Pitch								
SPE-M4-H	M4	0.7	8 10 12 15 20 25	7	2.8	Full Thread	738	0.47	0.26 - 0.48	10
SPE-M5-H	M5	0.8	10 12 15 20 25 30	8	3.5	Full Thread	1234	0.96	0.46 - 0.88	10
SPE-M6-H	M6	1	10 12 15 20 25 30 35 40 45 50	10	4	Full Thread	1749	1.64	0.75 - 1.9	10
SPE-M8-H	M8	1.25	10 12 15 20 25 30 35 40 45 50	13	5.5	30(L=50)	3261	3.68	1.6 - 4.1	5
SPE-M10-H	M10	1.5	20 25 30 35 40 45 50	17	7	35(L=50)	5256	7.9	4 - 6.4	1
SPE-M12-H	M12	1.75	40 45 50 70	19	8	Full Thread	7650	13.64	8.6 - 13	1

*1: If the "L" value is other than the value in parentheses, the screw is full thread.

*2: Values in chart are for reference only. They are not guaranteed values. The recommendation torque is 50% of the torsional torque.

- The M4 has a slot in its head.
- When purchasing less volume than one full bag, a separate handling fee is charged. For details, see the Sold Separately Service.

Related Products

SPE-N Plastic Hexagon Nut (PEEK) is available.



Part number specification

SPE-M5-20-H

Product Code	❶	❷	Product Code
--------------	---	---	--------------

Individual Sales → P.xxxx	Cleanroom Wash & Packaging → P.xxxx	Screw Length Adjustment → P.xxxx	Vibration Resistant → P.xxxx	Modification process for captive use → P.xxxx
Available / Add'l charge	Available / Add'l charge	Available / Add'l charge	Not Available	Please feel free to contact us