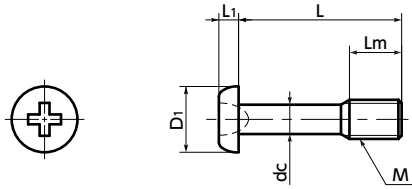


SSCZS Pan head captive machine screws for precision instruments (miniature screws)

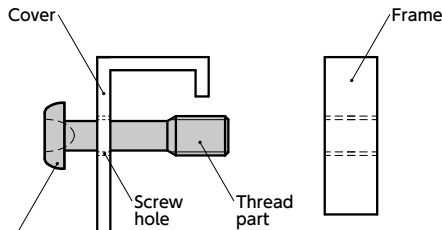


Protrusion Miniature Size SUS Stainless steel



● Installation example

Make a screw hole in the cover, then pass **SSCZS** thread through it. Even when the screw is removed from the frame, **SSCZS** does not fall out from the cover because **SSCZS** thread catches on the screw hole of the cover.



SSCZS Pan head captive machine screws for precision instruments

- For locations within precision instruments requiring frequent mounting and removal.
- M1.4 - M2.6. Pan Head Machine Screws for Precision Instruments.
- For CE Marking compatibility.
- Application

Fixing of protective covers/inspection jigs within precision instruments / CE marking compatible compact precision instruments and electric/electronic devices

● Material/Finish



	SSCZS
Main Body	SUSXM7(Equivalent to SUS304)

Precautions for Use

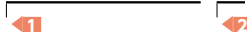
- Screw hole inner diameter on the cover side shall be at least the dc dimension.
- The cover thickness should be 0.3 mm or above.

Unit : mm

Part Number	M (Coarse)		L					Lm	D1	L1	dc	Cross-recessed Socket Number	Max. Torque(N·m)	Mass (g)
	Nominal of Thread	Pitch	4	5	6	8								
SSCZS-M1.4	M1.4	0.3	4	5	6	8	2	2	0.5	1.0 ⁰ _{-0.1}	0	0.03	0.04 - 0.06	
SSCZS-M1.6	M1.6	0.35	4	5	6	8	2	2.3	0.5	1.1 ⁰ _{-0.1}	0	0.04	0.05 - 0.08	
SSCZS-M1.7	M1.7	0.35	4	5	6	8	2	2.5	0.5	1.2 ⁰ _{-0.1}	0	0.04	0.06 - 0.08	
SSCZS-M2	M2	0.4	4	5	6	8	2.5	3	0.6	1.4 ⁰ _{-0.15}	0	0.09	0.09 - 0.13	
SSCZS-M2.5	M2.5	0.45			6	8	10	3	3.8	0.8	1.8 ⁰ _{-0.15}	0	0.15	0.21 - 0.25
SSCZS-M2.6	M2.6	0.45			6	8	10	3	4	0.8	1.8 ⁰ _{-0.15}	0	0.16	0.22 - 0.26

● Part number specification

SSCZS-M1.4-4



Individual Sales 1 piece in 1 pack	Cleanroom Wash & Packaging Available / Add'l charge	Screw Length Adjustment Not Available	Vibration Resistant Not Available	Modification process for captive use with Captive Processing
---------------------------------------	--	--	--------------------------------------	---