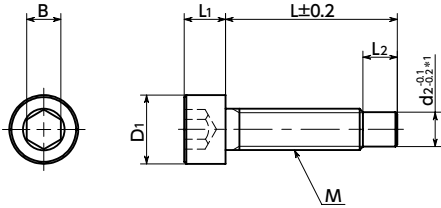


SDBS Hex Socket Head Cap Screws with Dog Point - Stainless Steel



SUS Stainless steel



* 1 : **SDBS-M8** : $d2_{-0.1}^{-0.3}$

● Material/Finish



	SDBS
Main Body	Equivalent to SUS304



- The screw tip shape is a dog point.
- Use for positioning or as a rotation stopper by fitting the tip dog point shape into the counterpart groove or hole.

* Dog point shape dimensions differ from JIS B 1177 for hex socket set screw long dog points.

Dimensions

Unit : mm

Part Number	M (Coarse)		L1	L2	d2	D1	B	Mass (g)
	Nominal of Thread	Pitch						
SDBS-M3	M3	0.5	3	2.5	2.5	5.5	2.5	0.9 - 1.3
SDBS-M4	M4	0.7	4	3	3	7	3	1.7 - 3.3
SDBS-M5	M5	0.8	5	4	4	8.5	4	3 - 5.6
SDBS-M6	M6	1	6	5	4	10	5	4.6 - 9.5
SDBS-M8	M8	1.25	8	6.5	6	13	6	11.3 - 19.9

Part Number	L (mm)									
	10	12	16	20	25	30	35	40	45	
SDBS-M3	●									
SDBS-M4		●	●	●	●	●				
SDBS-M5		●	●	●	●	●				
SDBS-M6		●	●	●	●	●	●	●		
SDBS-M8			●	●	●	●	●	●	●	

- Part Number Specification

SDBS-M4 - 20



For **2** screw length L, select from the sizes marked with ● in the table.

Cleanroom Wash & Packaging Please feel free to contact us	Screw Combination Not Available	Screw Length Adjustment Not Available	Vibration Resistant Available / Add'l charge
--------------------------------------------------------------	------------------------------------	------------------------------------------	-------------------------------------------------