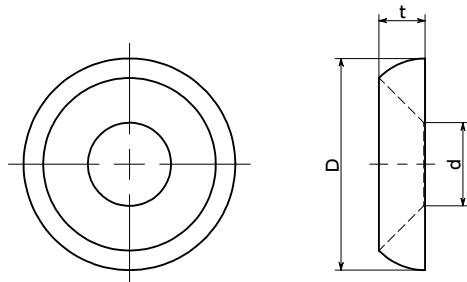




SWAS-RW Rosette Washer

SUS Stainless steel



- Washer for Flat Head Screw. A Flat Head Screw can be used without countersinking.
- It decorates the mounting part beautifully by sleek spherical shape.

● Application

For decoration/prevent from getting caught

● Material/Finish



SWAS-RW	
Main body	SUS303

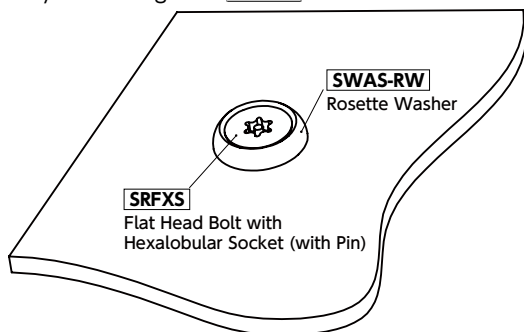
Unit : mm

Part Number	Nominal	D	d	t	Mass (g)	Qty per pack
SWAS-3-RW	3	10	3.5	2	0.74	10
SWAS-4-RW	4	12	4.5	2.5	1.1	10
SWAS-5-RW	5	14	5.5	3	1.9	10
SWAS-6-RW	6	16	6.5	3.5	3	10

- When purchasing less volume than one full bag, a separate handling fee is charged. For details, see the Sold Separately Service.

● Usage example

By combining with **SRFXS**.



● Part number specification

SWAS-6-RW



Individual Sales → P.0000	Cleanroom Wash & Packaging → P.0000	Screw Length Adjustment → P.0000	Vibration Resistant → P.0000	Modification process for captive use → P.0000
Available / Add'l charge	Available / Add'l charge	Not Available	Not Available	Not Available