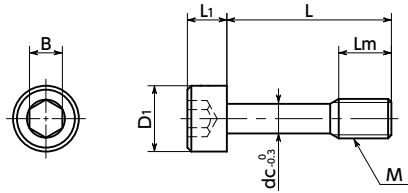


SSC-SNSTG Socket Head Cap Captive Screws - High Intensity Titanium

Cleanroom wash & packaging Chemical-proof Non-Magnetic High strength Lightweight High Specific Strength



● Material/Finish



	SSC-SNSTG
Main Body	Ti-6Al-4V (64 Titanium)

● Application

For fixing protective covers and maintenance covers
CE Marking compatible
Machine tools / Food machinery / Electrical and electronic equipment

● Mechanical Properties

	Ti-6Al-4V (64 Titanium)
Tensile Strength (N/mm ²)	895 or Higher
0.2% Proof Load (N/mm ²)	825 or Higher
Elongation (%)	10 or Higher

● Values in chart are for reference only. They are not guaranteed values.

● Physical Properties

	Ti-6Al-4V (64 Titanium)
Specific Gravity	4.43
Melting Point (°C)	1540
Longitudinal Elastic Modulus (GPa)	113
Thermal Conductivity (W/(m·K))	7.5
Linear Expansion Coefficient (K ⁻¹)	8.8 × 10 ⁻⁶
Electric Resistance (μΩ·m)	1.7
Magnetic Permeability (μ)	1.0002 (Nonmagnetic)

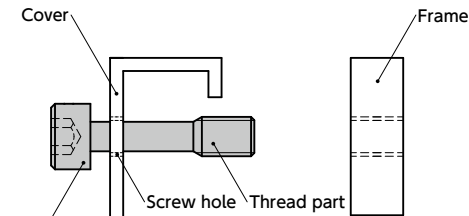
● Values in chart are for reference only. They are not guaranteed values.



- Prevents fall-off and loss of the screw. They are intended to fix protective and inspection covers that are frequently installed and removed.
- For CE Marking compatibility.
- Made of high-strength titanium alloy.
- The specific gravity is approximately 60% that of stainless steel.
- Non-magnetic.
- Resistant to corrosion and with especially good seawater resistance.
- For the properties of titanium materials, see "Properties of Titanium."
- Cleanroom wash/cleanroom packing provided.

● Installation Example

Make a screw hole in the cover, and then pass the **SSC-SNSTG** thread part through it. Even when the screw is removed from the frame, **SSC-SNSTG** does not fall out of the cover because the **SSC-SNSTG** thread part catches on the cover screw hole.



SSC-SNSTG Hex socket head cap captive screw

⚠ Precautions for Use

- Screw hole inner diameter on the cover side shall be at least the dc dimension.
- The cover thickness should be 0.8mm or above.

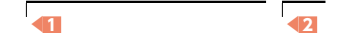
Unit : mm

Part Number ◀1	M (Coarse)		L ◀2	Lm	D1	L1	B	dc	Mass (g)
	Nominal of Thread	Pitch							
SSC-SNSTG-M3	M3	0.5	8 10 12 16	4	5.5	3	2.5	2.2	0.42 - 0.58
SSC-SNSTG-M4	M4	0.7	10 12 16 20	5	7	4	3	3	0.93 - 1.3
SSC-SNSTG-M5	M5	0.8	12 16 20 25	6	8.5	5	4	3.9	1.6 - 2.3
SSC-SNSTG-M6	M6	1	12 16 20 25 30	8	10	6	5	4.5	2.6 - 3
SSC-SNSTG-M8	M8	1.25	16 20 25 30 35 40	10	13	8	6	6.3	6.1 - 8

1 Individual Sales	Cleanroom Wash & Packaging	Screw Length Adjustment	Vibration Resistant	Modification process for captive use
1 piece in 1 pack	Cleanroom washed and packed	Not Available	Not Available	with Captive Processing

● Part Number Specification

SSC-SNSTG-M5-20



Batch cleanroom packing is provided for orders containing multiple items of the same size.