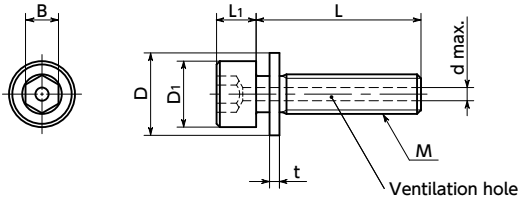


# SVSI1S-PC

Hex Socket Head Cap Screw with Captive Washer and Ventilation Hole - Chemical Polish



Vacuum Cleanroom wash & packaging Easy operation SUS Stainless steel



● Material/Finish



	SVSI1S-PC
Screw Body	SUSXM7 (Equivalent to SUS304) Special Chemical Polish
Screw Body Strength Class	A2 - 70
Plain Washer	SUS304 Special Chemical Polish

- The ventilation hole easily releases gas trapped in the screw holes of equipment and machines, and supports vacuum drawing of vacuum devices.
- Ventilation holes are machined using a method with minimal effect on metallic structures. Brittle fracture and outgassing during use in vacuum environments are prevented.
- Special chemical polishing treatment improves the surface roughness. Outgas quantity is extremely low. Ideal for use in medium vacuum environments.
- Plain washers are integrated into the screws, preventing concerns about fallout issues. (Washer abbreviation: I=1)
- When using a washer in spot facing, workability is improved because the bolt and washer can be mounted and removed at the same time.
- Washer mounting work is not required. Cleanroom work in gloves is easier.
- Cleanroom wash/cleanroom packing provided.

● Application

Semiconductor manufacturing equipment / Equipment and device structures / Offshore instruments / General industrial machines

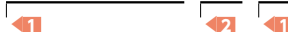
Unit : mm

Part Number	M (Coarse)		L													D1	D	L1	B	t	d max.	Mass (g)	Qty per Pack
	Nominal of Thread	Pitch	5	6	8	10	12	16	20	25	30	35	40	45									
SVSI1S-M3-PC	M3	0.5	5	6	8	10	12	16								5.5	7	3	2.5	0.5	1.2	0.79 - 1.3	10
SVSI1S-M4-PC	M4	0.7	5	6	8	10	12	16	20	25	30	35				7	9	4	3	0.8	1.5	1.7 - 4.5	10
SVSI1S-M5-PC	M5	0.8		6	8	10	12	16	20	25	30	35	40			8.5	10	5	4	1	1.5	2.6 - 7.5	10
SVSI1S-M6-PC	M6	1			8	10	12	16	20	25	30	35	40	45		10	12.5	6	5	1.5	2	5.4 - 13	10

● When purchasing less volume than one full bag, a separate handling fee is charged. For details, see the Sold Separately Service.

● Part Number Specification

**SVSI1S-M3-10-PC**



Individual Sales	Cleanroom Wash & Packaging	Screw Length Adjustment	Vibration Resistant	Modification process for captive use
Available / Add'l charge	Cleanroom washed and packed	Not Available	Not Available	Not Available