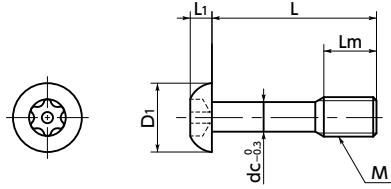


# SSC-SRBS Captive Button Head Cap Bolts with Hexalobular Socket (with Pin)

SUS Stainless steel Tamper Resistance



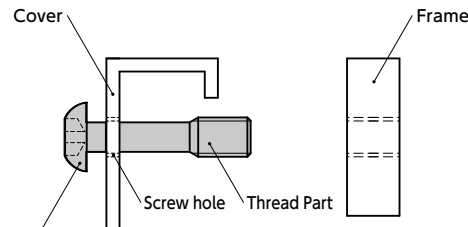
● Material/Finish



<b>SSC-SRBS</b>	
Main Body	Equivalent to SUS304
Strength Class	Equivalent to A2-50

● Installation example

Machine a screw hole on the cover and let through the threaded part of **SSC-SRBS**. Threaded part of **SSC-SRBS** is still engaged with the screw hole on the cover even after the screw is removed from the frame, so **SSC-SRBS** never fall out of the cover.



**SSC-SRBS** Captive Button Head Cap Bolt with Hexalobular Socket (with Pin)

⚠ Precautions for Use

- Screw hole inner diameter on the cover side shall be at least the dc dimension.
- The cover thickness should be 0.8 mm or above.



- Prevents fall-off and loss of the screw. They are intended to fix protective and inspection covers that are frequently installed and removed.
- Tamper resistant screw type.
- For CE Marking compatibility. → P.xxxx
- Install and remove with **SRX** Dedicated Wrench or **SRXB** Dedicated Bit and **SRD** Dedicated Magnetic Screwdriver together.
- We also produce captive screws of special specifications, e.g. dimensions, shapes, materials and surface treatment. Please contact our customer service.



● Application

Fixing of protection cover and cover for inspection / CE marking Machine tool / Food machinery / and Electronic device

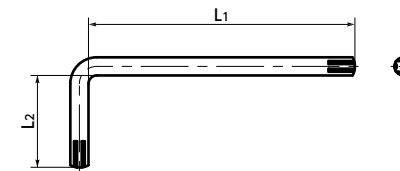
Part Number	M (Coarse)		L	Lm	D1	L1	dc	Applicable Wrench Type	Applicable Bit Type		Hexalobular Socket No.	Mass (g)		
	Nominal of Thread	Pitch							Bit	Driver				
<b>SSC-SRBS-M3</b>	M3	0.5	8	10	12	16		SRX-10	SRXB-10	SRD-6.35	10	0.57 - 0.93		
<b>SSC-SRBS-M4</b>	M4	0.7		10	12	16	20	SRX-20	SRXB-20	SRD-6.35	20	1.4 - 2.2		
<b>SSC-SRBS-M5</b>	M5	0.8			12	16	20	25	SRX-25	SRXB-25	SRD-6.35	25	2.3 - 4.1	
<b>SSC-SRBS-M6</b>	M6	1			12	16	20	25	30	SRX-30	SRXB-30	SRD-6.35	30	3.6 - 6.9
<b>SSC-SRBS-M8</b>	M8	1.25			16	20	25	30	40	SRX-40	SRXB-40	SRD-6.35	40	9.1 - 18

Unit : mm

● **SRX** Dedicated Wrench

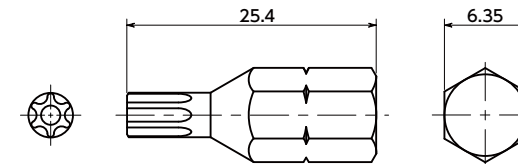
Unit : mm

Part Number	L1	L2	Mass (g)
<b>SRX-10</b>	60	20	3.7
<b>SRX-20</b>	67	23	8.2
<b>SRX-25</b>	70	25	11
<b>SRX-30</b>	81	28	20
<b>SRX-40</b>	88	31	32



● **SRXB** Bit Part No.

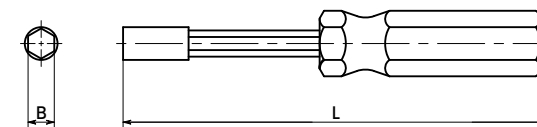
Part Number	Mass (g)
<b>SRXB-10</b>	4.36
<b>SRXB-20</b>	4.57
<b>SRXB-25</b>	4.79
<b>SRXB-30</b>	5.50
<b>SRXB-40</b>	6.00



● **SRD** Dedicated magnet screwdriver

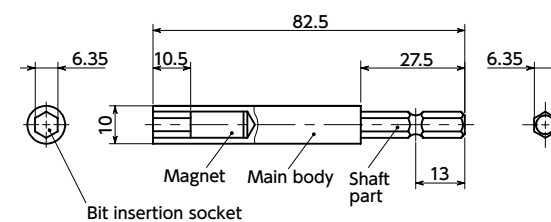
Unit : mm

Part Number	L	B	Mass (g)
<b>SRD-6.35</b>	210	6.35	98



● **SKABA** Applicable Bit Adapter

Part Number	Mass (g)
<b>SKABA-80-6.35</b>	37



● Part number specification

**SSC-SRBS-M6-12**

Individual Sales → P.xxxx	Cleanroom Wash & Packaging → P.xxxx	Screw Length Adjustment → P.xxxx	Vibration Resistant → P.xxxx	Modification process for captive use → P.xxxx
1 piece in 1 pack	Available / Add'l charge	Not Available	Not Available	with Captive Processing