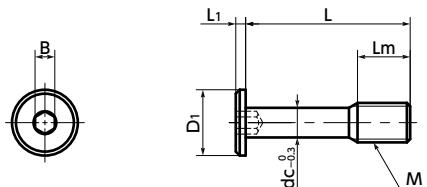




SSCHS Socket Head Cap Captive Screws with Special Low Profile

Protrusion **SUS** Stainless steel



⚠ Precautions for Use

- The inner diameter of the screw hole of the cover must be equal or larger than dimension dc.
- The thickness of the cover must be 0.8 mm or more.
- Installation example
Make a screw hole in the cover, then pass **SSCHS** thread through it. Even when the screw is removed from the frame, **SSCHS** does not fall out from the cover because **SSCHS** thread catches on the screw hole of the cover.



SSCHS Socket Head Cap Captive Screw with Special Low Profile

- The shape of the screws prevent them from falling out and loss. They are intended to fix protective and inspection covers that are frequently installed and removed.
- These screws are intended for the reduction of the size of machinery and device and applications with limited overhead space.
- These items comply with CE marking requirements.

• Application

Securement of protective and inspection covers and compliance with CE marked products
Machine tools, food industry machines, and electrical and electronic equipment

• Material/Finish



	SSCHS
Main Body	SUSXM7 (Equivalent to SUS304)
Strength Class	A2-40

Unit : mm

Part Number 1	M (Coarse)		L 2							Lm	D1	L1	B	dc	Max.Torque (N·m)	Mass (g)
	Nominal of Thread	Pitch	8	10	12	16	20	25	30							
SSCHS-M3	M3	0.5	8	10	12					4	6	1.3	1.5	2.2	0.11	0.53 - 0.69
SSCHS-M4	M4	0.7		10	12	16				5	8	1.5	2	3	0.39	1.2 - 1.6
SSCHS-M5	M5	0.8			12	16	20			6	9	1.5	3	3.9	0.52	1.5 - 2.5
SSCHS-M6	M6	1			12	16	20	25	30	8	10	1.5	3	4.5	1.6	2.3 - 5.5
SSCHS-M8	M8	1.25				16	20	25	30	10	13	1.5	4	6.3	5	5.4 - 10

• Part number specification

SSCHS-M6-12



Individual Sales 1 piece in 1 pack	Cleanroom Wash & Packaging Available / Add'l charge	Screw Length Adjustment Not Available	Vibration Resistant Not Available	Modification process for captive use with Captive Processing
---------------------------------------	--	--	--------------------------------------	---