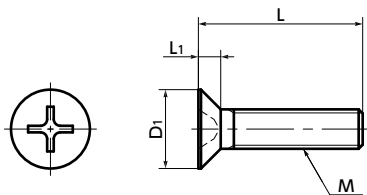


# SPS-F Plastic Screw PPS / Phillips Cross Recessed Flat Head Machine Screws



Heat-resistance Chemical-proof High Specific Strength



● Material/Finish



	<b>SPS-F</b>
Main body	PPS (Polyphenylene Sulfide) (Bright Light Brown) (Glass Fiber 40%)
Heat Resistance Temperature*1	200°C

\*1: This is the value for the plastic material. The maximum operating temperature of the product changes with performance conditions such as tightening torque.

- PPS has excellent heat resistance and chemical resistance and continuous duty temperature of 200°C. Under 200°C, no oils, fats, or organic solvents dissolve PPS.
- It has high strength, high rigidity, and high heat resistance strength.
- It has high incombustibility that meets V-0 of UL 94.
- The properties and precautions of plastic screws  
➔ P.xxxx

● Application

FPD production equipment / Semiconductor devices / Printed circuit board etching devices / Metallic surface treatment equipment and facilities / Chemical plants / Transformers / Electrical and electronic equipment / Hot water pumps / Chemical pumps

Part Number	M (Coarse)		L							D1	L1	Cross-recessed Socket Number	Tension*1 Rupture Load (N)	Torsional*1 Torque (N·m)	Mass (g)	Qty per pack	
	Nominal of Thread	Pitch	6	8	10	12	15	20	25								
<b>SPS-M3-F</b>	M3	0.5	6	8	10	12	15	20	25	6	1.75	2	558	0.29	0.11 - 0.27	20	
<b>SPS-M4-F</b>	M4	0.7	8	10	12	15	20	25		8	2.3	2	966	0.69	0.25 - 0.47	20	
<b>SPS-M5-F</b>	M5	0.8			10	12	15	20	25	10	2.8	2	1548	1.23	0.52 - 0.87	10	
<b>SPS-M6-F</b>	M6	1			10	12	15	20	25	30	12	3.4	3	2028	2.05	0.83 - 1.4	10

\*1: Values in chart are for reference only. They are not guaranteed values. The recommendation torque is 50% of the torsional torque.  
● When purchasing less volume than one full bag, a separate handling fee is charged. For details, see the Sold Separately Service.

● Part number specification

**SPS - M5 - 20 - F**



Individual Sales ➔ P.xxxx	Cleanroom Wash & Packaging ➔ P.xxxx	Screw Length Adjustment ➔ P.xxxx	Vibration Resistant ➔ P.xxxx	Modification process for captive use ➔ P.xxxx
Available / Add'l charge	Available / Add'l charge	Available / Add'l charge	Not Available	Not Available