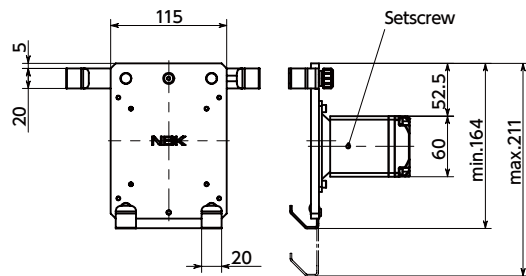
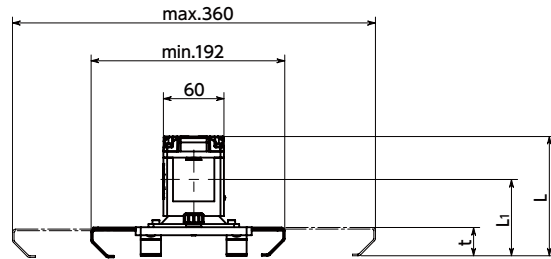
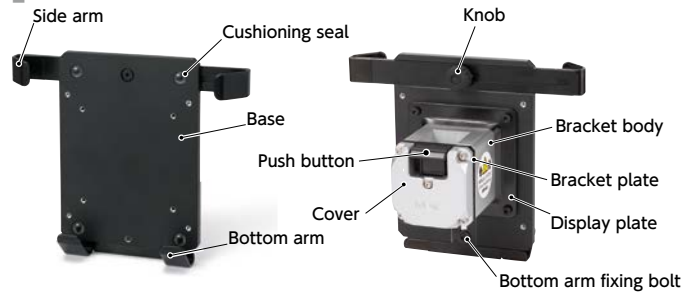


DTAC-AB-A Tablet PC Holders - Quick Positioning Type - For Aluminum Frames Patent Pending

Aluminum frame mount

Structure



Material/Finish

	DTAC-AB-A
Base	Aluminum Alloy Electrostatic Coating
Side Arm	SPHC
Bottom Arm	Electrostatic Coating Nylon Coating (Tip Only)
Knob	Nylon 6
Knob Thread Part	S45C Trivalent Chromate Treatment
Bottom Arm Fixing Bolt	SCM435 Ferrosferic Oxide Film
Cushioning Seal	Polyurethane
Display Plate	SPHC Electrostatic Coating
Bracket Body	A6063 Anodized
Cover	Aluminum Die Cast Electrostatic Coating (metallic silver)
Bracket Plate	Polyacetal (Black)
Push Button	Polyacetal (Black)
Setscrew	PC (Polycarbonate) (Transparent)



Part Number	Supported Tablet PCs*1			L1	L	t	Max. Load Weight (kg)	Mass (g)
	Thickness min./max.	Width min./max.	Height min.					
DTAC-13-330-AB-30-BK-A	6 / 13	190 / 330	155	71	110	28	5	1149
DTAC-13-330-AB-40-BK-A	6 / 13	190 / 330	155	76	120	28	5	1121
DTAC-20-330-AB-30-BK-A	13 / 20	190 / 330	155	78	117	35	5	1157
DTAC-20-330-AB-40-BK-A	13 / 20	190 / 330	155	83	127	35	5	1129

*1: Some tablet PC models may not be mountable.

- Holder for mounting tablet PCs to vertical axis aluminum frames/square shafts.
- Mounting to aluminum frames/square shafts uses **CUAB-A** for simple positioning.
- Mounting is possible from either the end or the side of the aluminum frame/square shaft.
- Push the push button to unlock the lock, smoothly move the bracket vertically, and release the push button to fix it in position.
- It can be moved upward without pushing the push button, just by applying force.
- The play with the aluminum frame or square shaft can be reduced through adjusting the setscrew screw-in depth.



- Load capacity of up to 5 kg.
- Tablet PCs between 9 and 12 inches *1 can be mounted by adjusting the side arm and bottom arm.

*1: 9-inch and 10-inch tablet PCs can only be installed horizontally.

- Select the part number depending on the thickness of the tablet PC to be mounted.

Tablet PC Thickness	Part Number
6 - 13 mm	DTAC-13-330-AB-**-BK-A
13 - 20 mm	DTAC-20-330-AB-**-BK-A

- The nylon coating on the arm tip and the cushioning seal on the base prevent the tablet PC from being scratched.

Specifications

	DTAC-**-330-AB-30-BK-A	DTAC-**-330-AB-40-BK-A
Applicable Aluminum Frame/Square Shaft	□ 30±0.54	□ 40±0.60
Push Button Press Count Resistance*1	20,000 Times	

*1: Values are for reference only. They are not guaranteed values.

⚠ Precautions for Use

- Mount to a vertical axis.
- **DTAC-AB-A** requires vertical mounting. If mounted upside-down, **DTAC-AB-A** cannot remain fixed onto aluminum frames/square shafts.
- **DTAC-AB-A** is a product that uses friction fastening. In cases where oil, etc. adhered to the aluminum frame/square shaft causes the coefficient of friction to decrease or if impact loads or vibrations occur, the maximum load weight may decrease.
- When pressing the push button on **DTAC-AB-A** to move the workpiece, make sure to support **DTAC-AB-A** or the workpiece with both hands. Pressing the push button may cause a sudden drop, especially if a heavy object is loaded.
- The surface may be scratched depending on the material and surface treatment of the aluminum frame/square shaft.
- If excessive loads are applied, then the aluminum frame/square shaft may be scratched or **DTAC-AB-A** may be damaged.
- Pressing the push button while wearing gloves could cause the glove material to get caught between the push button and bracket body. This may prevent the push button from being released, which will prevent the aluminum frame from being fixed in position.
- If forcefully screwed in, the setscrew will deform.

• Application

Machine tool / Medical equipment / FPD production equipment / Semiconductor manufacturing equipment / Packing machine / Food machinery

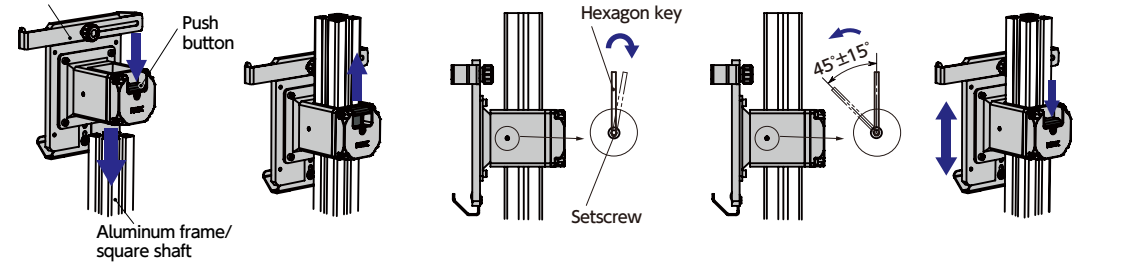
• Part Number Specification

DTAC-13-330-AB-30-BK-A

• Mounting

• Aluminum Frame/Square Shaft Mounting Method (End Mounting)

DTAC-AB-A

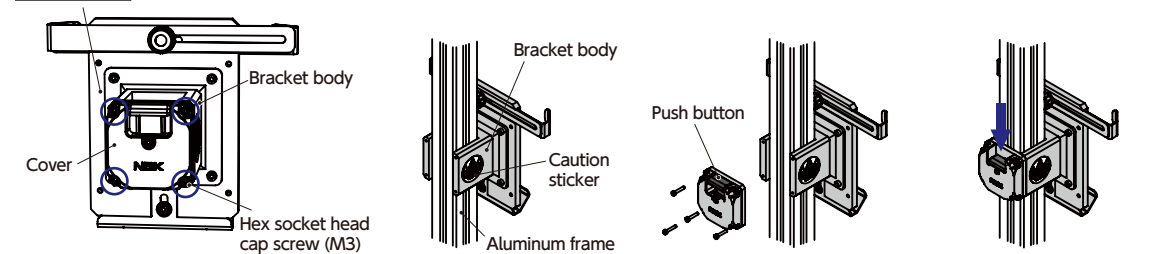


- 1 Push the **DTAC-AB-A** and insert onto the aluminum frame/square shaft in the unlocked state.
- 2 Release the push button to fix **DTAC-AB-A** in place.
- 3 Lightly push the setscrew to the aluminum frame or square shaft with a hexagon key *1 or flathead screwdriver.
- 4 Loosen the setscrew thus pushed by $45^{\circ} \pm 15^{\circ}$.
- 5 Pushing the button again enables **DTAC-AB-A** to be moved to the desired position.

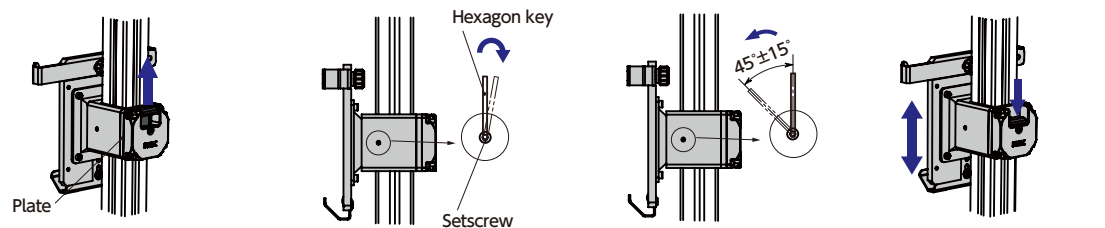
*1: The setscrew hex socket width across flat nominal is 1.3 mm.

• Aluminum Frame/Square Shaft Mounting Method (Side Mounting)

DTAC-AB-A



- 1 Use the hexagon key to loosen the hex socket head cap screws x 4 at the four corners of the **DTAC-AB-A** cover, and then remove the cover.
- 2 Fit the bracket body into the aluminum frame in alignment with the caution sticker.
- 3 With the push button facing up, temporarily fix the cover on the bracket body.
- 4 With the push button pushed all the way down, tighten the hex socket head cap screws at the four corners of the cover.*1

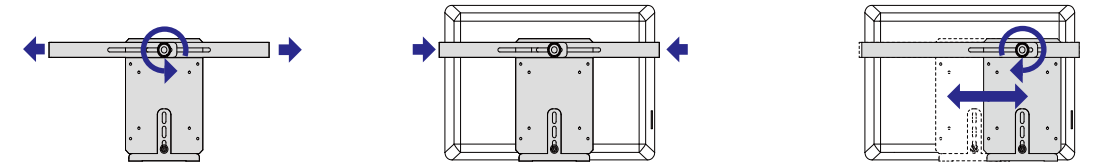


- 5 Release the push button to fix **DTAC-AB-A** in place. Check that there is no gap between the plate and the bracket body.
- 6 Lightly push the setscrew to the aluminum frame or square shaft with a hexagon key *2 or flathead screwdriver.
- 7 Loosen the setscrew thus pushed by $45^{\circ} \pm 15^{\circ}$.
- 8 Pushing the button again enables **DTAC-AB-A** to be moved to the desired position.

*1: Tightening torque reference value: 0.315N·m

*2: The setscrew hex socket width across flat nominal is 1.3 mm.

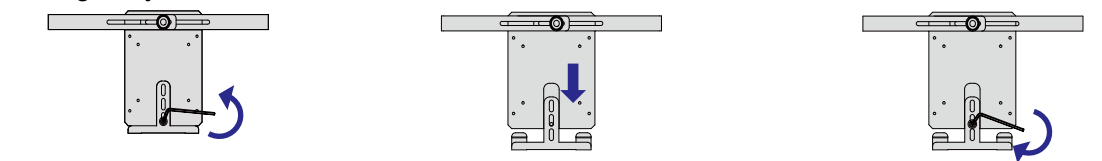
• Tablet PC Mounting Method



- 1 Loosen the rear knob to freely move the side arms.
- 2 Insert the tablet PC and push the side arms from both sides to secure it. Secure firmly so that the cushioning seal touches the tablet PC closely.
- 3 Adjust the positions of the arms if they interfere with the tablet PC ports. Tighten the rear knob to complete mounting.*1

*1: The tablet PC may fall out of the holder if not tightened sufficiently.

• Height Adjustment Method



- 1 Loosen the bottom arm fixing bolt with a hex wrench to remove.
- 2 Adjust the bottom arm to the desired position.
- 3 Firmly tighten the bottom arm fixing bolt with a hex wrench.*1

*1: The tablet PC may fall out of the holder if not tightened sufficiently.