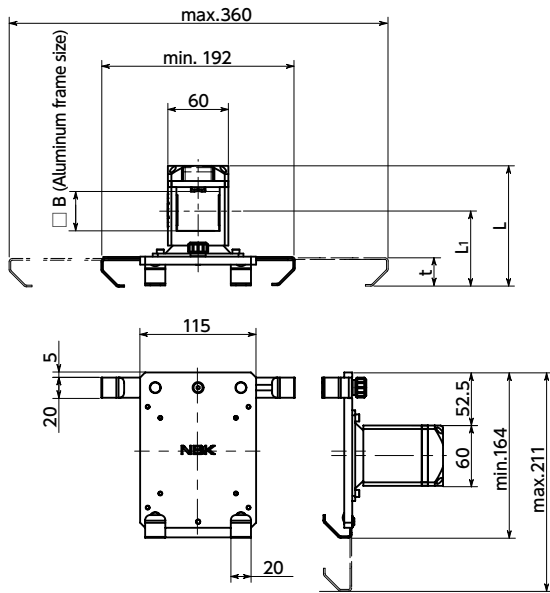
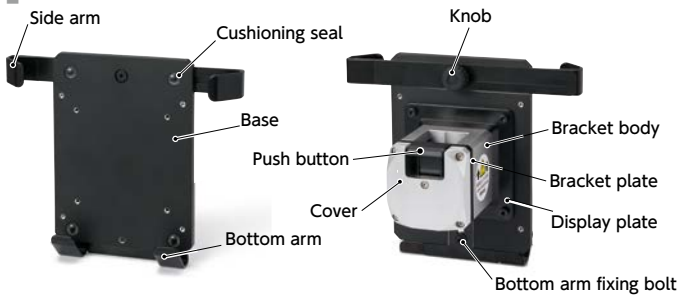


Structure



- Holder for mounting tablet PCs to vertical axis aluminum frames/square shafts.
- Mounting to aluminum frames/square shafts uses **CUAB** (→ P.xxxx) for simple positioning.
- Push the push button to unlock the lock, smoothly move the bracket vertically, and release the push button to fix it in position.
- It can be moved upward without pushing the push button, just by applying force.
- Load capacity of up to 5 kg.
- Tablet PCs between 9 and 12 inches*1 can be mounted by adjusting the side arm and bottom arm.

*1: 9-inch and 10-inch tablet PCs can only be installed horizontally.

- Select the model number depending on the thickness of the tablet PC to be mounted.
 Tablet PC Thickness
 6 - 13 mm ————— **DTAC-13-330-AB-**-BK**
 13 - 20 mm ————— **DTAC-20-330-AB-**-BK**
- The nylon coating on the arm tip and the cushioning seal on the base prevent the tablet PC from being scratched.

● Application

Machine tool / Medical equipment / FPD production device / Semiconductor manufacturing device / Packing machine / Food machinery

● Material/Finish



	DTAC-AB
Base	Aluminum Alloy Electrostatic Coating
Side Arm	SPHC
Bottom Arm	Electrostatic Coating Nylon Coating (Tip Only)
Knob	Nylon 6
Knob Thread Part	S45C Trivalent Chromate Treatment
Bottom Arm Fixing Bolt	SCM435 Ferrosferric Oxide Film
Cushioning Seal	Polyurethane
Display Plate	SPHC Electrostatic Coating
Bracket Body	A6063 Anodized
Cover	A6063 Anodized
Bracket Plate	Polyacetal (Black)
Push Button	Polyacetal (Black)

● Specifications

	DTAC-**-330-AB-30-BK	DTAC-**-330-AB-40-BK
Applicable Aluminum Frame/Square Shaft	□ 30±0.54	□ 40±0.60
Push Button Press Count Resistance*1	20,000 Times	

*1: Values are for reference only. They are not guaranteed values.

Unit : mm

Part Number	Supported Tablet PCs*1				B	L ₁	L	t	Max. Load Weight (kg)	Mass (g)
	Thickness min./max.	Width min./max.	Height min.							
DTAC-13-330-AB-30-BK	6 / 13	190 / 330	155		30	71	110	28	5	1157
DTAC-13-330-AB-40-BK	6 / 13	190 / 330	155		40	76	120	28	5	1130
DTAC-20-330-AB-30-BK	13 / 20	190 / 330	155		30	78	117	35	5	1165
DTAC-20-330-AB-40-BK	13 / 20	190 / 330	155		40	83	127	35	5	1138

*1: Some tablet PC models may not be mountable. We will lend sample models to confirm that your device can be mounted. Please contact our customer service.

Precautions for Use

- Mount to a vertical axis.
- **DTAC-AB** requires vertical mounting. If mounted upside-down, **DTAC-AB** cannot remain fixed onto aluminum frames/square shafts.
- **DTAC-AB** is a product that uses friction fastening. In cases where oil, etc. adhered to the aluminum frame/square shaft causes the friction coefficient to decrease or if impact loads or vibrations occur, the maximum load weight may decrease.
- The surface may be scratched depending on the material and surface finish of the aluminum frame/square shaft.
- If excessive loads are applied, then the aluminum frame/square shaft may be scratched or **DTAC-AB** may be damaged.

● Related Products

Brackets for convenient positioning on aluminum frames/square shafts **CUAB** are available.
 → P.xxxx

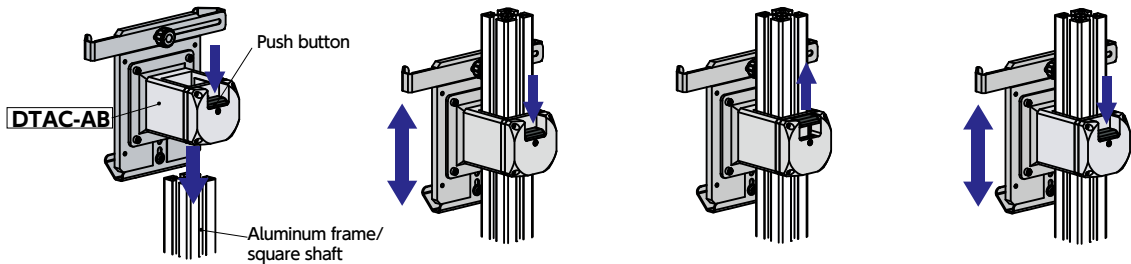


● Part number specification

DTAC-13-330-AB-30-BK

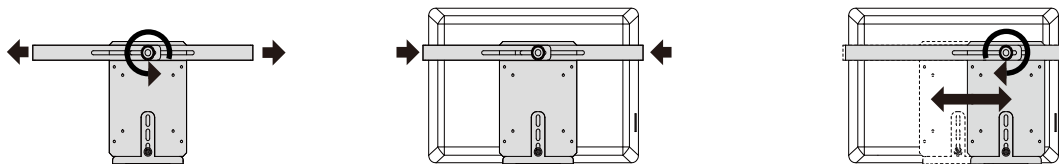


• Aluminum Frame/Square Shaft Mounting Method



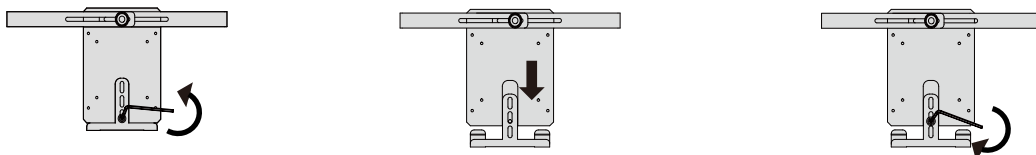
- ① Push the **DTAC-AB** button, and insert onto the aluminum frame/square shaft in the unlocked state.
- ② While continuing to push the button, move **DTAC-AB** to the position it should be fixed.
- ③ Release the push button to fix **DTAC-AB** in place.
- ④ Pushing the button again enables **DTAC-AB** to be moved to the desired position.

• Tablet PC Mounting Method



- ① Loosen the rear knob to freely move the side arms.
- ② Insert the tablet PC and push the side arms from both sides to secure it. Secure firmly so that the cushioning seal touches the tablet PC closely.
- ③ Adjust the positions of the arms if they interfere with the tablet PC ports. Tighten the rear knob to complete mounting.* 1

• Height Adjustment Method



- ① Loosen the bottom arm fixing bolt with a hex wrench to remove.
- ② Adjust the bottom arm to the desired position.
- ③ Firmly tighten the bottom arm fixing bolt with a hex wrench.* 1

*1: The tablet PC may fall out of the holder if not tightened sufficiently.