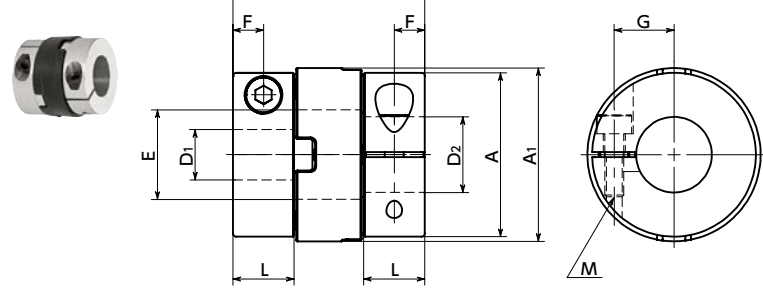


MOC-C Flexible Couplings - Oldham Type - Clamping Type

High torque High Allowable Misalignment Small Eccentric Reaction Force

MOC-C



Dimensions

Unit : mm

Part Number ¹	A	A1	L	W	E	F	G	M	Screw Tightening Torque (N·m)
MOC-12C	12	12	6.2	19	5.2	3.1	4	M2	0.5
MOC-17C	15	16.5	7	21.2	8.2	3.5	5	M2.5	1
MOC-23C	20	22.5	8.8	27.6	12.2	4.4	7.5	M3	1.5
MOC-28C	26	27.5	9.7	30.4	14.2	4.9	9.5	M3	1.5
MOC-33C	30	32.5	10	32.6	15.2	5	11.1	M4	2.5
MOC-41C	38	41	12.1	40.1	18.3	6	14.2	M5	4

Part Number	Standard Bore Diameter D1 · D2 (Dimensional Allowance H8) ²												
	3	4	5	6	8	10	12	14	15	16	18	20	
MOC-12C	●	●	●										
MOC-17C		●	●	●									
MOC-23C			●	●	●								
MOC-28C				●	●	●	●	●					
MOC-33C					●	●	●	●	●				
MOC-41C						●	●	●	●	●	●	●	●

- All products are provided with hex socket head cap screw.
- Recommended tolerance for shaft diameters is h6 and h7.
- A set of hubs with set screw type for one side and clamping type for the other side and others are available upon request.
- For the shaft insertion amount to the coupling, see Mounting/maintenance.

Performance

Part Number	Max. Bore Diameter (mm)	Rated Torque *1 (N·m)	Maximum Torque *1 (N·m)	Max. Rotational Frequency (min ⁻¹)	Moment of Inertia *2 (kg·m ²)	Static Torsional Stiffness (N·m/rad)	Max. Lateral Misalignment (mm)	Max. Angular Misalignment (°)	Mass *2 (g)
MOC-12C	5	1.2	2.1	3000	9.3×10 ⁻⁸	25	1	3	4
MOC-17C	6	1.8	3.6	3000	2.7×10 ⁻⁷	50	1	3	8
MOC-23C	10	4	8	3000	1.1×10 ⁻⁶	150	1.2	3	16
MOC-28C	14	8	14	3000	3.2×10 ⁻⁶	350	1.5	3	27
MOC-33C	14	16	25	3000	6.3×10 ⁻⁶	450	2	3	43
MOC-41C	20	30	46	3000	2.0×10 ⁻⁵	1100	2.5	3	79

*1: If ambient temperature exceeds 30°C, be sure to correct the rated torque and max. torque with temperature correction factor shown in the following table. The allowable operating temperature of MOC-C is -20°C to 80°C.

*2: These are values with max. bore diameter.

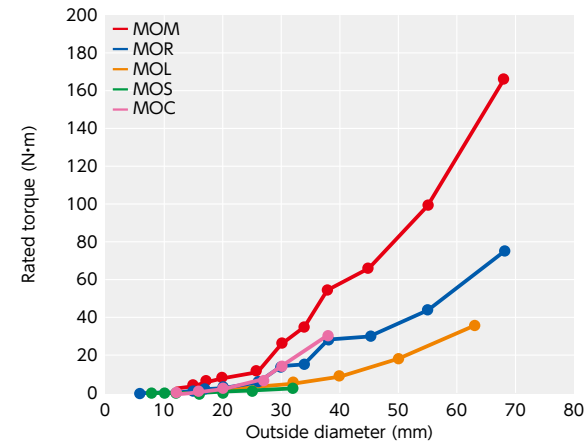
⚠ Precautions for Use

- In case of mounting on D-cut shaft, be careful about the position of the D-cut surface of the shaft.
- There are sizes where the hex socket head cap screw exceeds the outer diameter of the coupling and the rotating diameter is larger than the outer diameter. Please be careful of the interference of coupling.

• Ambient Temperature / Temperature Correction Factor

Ambient Temperature	Temperature Correction Factor
-20°C to 30°C	1.00
30°C to 40°C	0.80
40°C to 60°C	0.70
60°C to 80°C	0.55

• Comparison of Rated Torque



• Part number specification

MOC-28C-8-12 1 Set

¹ ²

MOC-23 - SPCR Single Spacer

Product Symbol | Outside Diameter (Dimension A) | Single Spacer

Additional Keyway at Shaft Hole Available / Add'l charge	Cleanroom Wash & Packaging Please feel free to contact us	Change to Stainless Steel Screw Available / Add'l charge
---	--	---