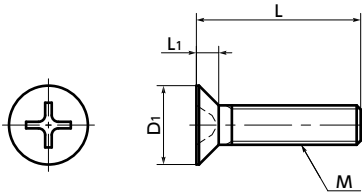


# SPA-F Plastic Screw RENY / Phillips Cross Recessed Flat Head Machine Screws



High strength High Specific Strength



● Material/Finish



	<b>SPA-F</b>
Main body	RENY™*1 (50% Glass Fiber Reinforced Polyamide MXD6) (Ivory)
Heat Resistance Temperature*2	105°C

- \*1: RENY™ is a trademark or registered trademark of Mitsubishi Gas Chemical Company, Inc.
- \*2: This is the value for the plastic material. The maximum operating temperature of the product changes with performance conditions such as tightening torque.

- RENY™ is a thermoplastic super-engineering plastic with excellent tensile and flexural strength.
- Screws have excellent fatigue resistance, creep resistance, and thermal insulation.
- While it is nearly as strong as metal, its weight is approximately 1/5 of iron.
- The properties and precautions of plastic screws

● Application

Electrical and electronic equipment / Insulation and dew condensation prevention for refrigerators and freezers / Aquatic applications / Electrochemical plating / Lightweight applications in automobiles, aircrafts, and spacecrafts

Part Number	M (Coarse)		L <span style="color:red">2</span>										D1	L1	Cross-recessed Socket Number	Tension*1 Rupture Load (N)	Torsional*1 Torque (N·m)	Mass (g)	Qty per pack
	Nominal of Thread <span style="color:red">1</span>	Pitch	6	8	10	12	5	15	20	25	30	35							
<b>SPA-M2-F</b>	M2	0.4	6	8	10								4	1.2	1	350	0.101	0.038 - 0.053	50
<b>SPA-M2.6-F</b>	M2.6	0.45	6	8	10	4	12						5.2	1.5	1	611	0.22	0.043 - 0.094	50
<b>SPA-M3-F</b>	M3	0.5	6	8	10	12	5	15	20	25			6	1.75	2	853	0.36	0.1 - 0.25	50
<b>SPA-M4-F</b>	M4	0.7	6	8	10	12		15	20	25			8	2.3	2	1499	0.85	0.22 - 0.52	50
<b>SPA-M5-F</b>	M5	0.8			10	12		15	20	25			10	2.8	2	2407	1.65	0.52 - 0.86	20
<b>SPA-M6-F</b>	M6	1			10	12		15	20	25	30		12	3.4	3	3106	2.74	0.83 - 1.6	20
<b>SPA-M8-F</b>	M8	1.25						15	20	25	30	16	4.4	3	5335	6.22	2.1 - 3.1	10	

- \*1: Values in chart are for reference only. They are not guaranteed values. The recommendation torque is 50% of the torsional torque.
- When purchasing less volume than one full bag, a separate handling fee is charged. For details, see the Sold Separately Service.

● Part number specification

## SPA - M5 - 20 - F

Product Code	<span style="color:red">1</span>	<span style="color:red">2</span>	Product Code
--------------	----------------------------------	----------------------------------	--------------

Individual Sales → P. xxxxx	Cleanroom Wash & Packaging → P. xxxxx	Screw Length Adjustment → P. xxxxx	Vibration Resistant → P. xxxxx	Modification process for captive use → P. xxxxx
Available / Add'l charge	Available / Add'l charge	Not Available	Not Available	Not Available