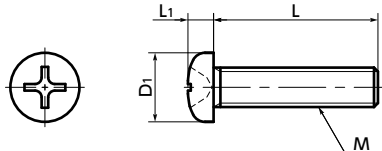


# SPS-P Plastic Screw - Cross Recessed Pan Head Machine Screws - PPS



Heat-resistance Chemical-proof High Specific Strength



● Material/Finish



	<b>SPS-P</b>
Main body	PPS (Polyphenylene Sulfide) (Bright Light Brown) (Glass Fiber 40%)
Heat Resistance Temperature*1	200°C

\*1: This is the value for the plastic material. The maximum operating temperature of the product changes with performance conditions such as tightening torque.

- PPS has excellent heat resistance and chemical resistance and continuous duty temperature of 200°C. Under 200°C, no oils, fats, or organic solvents dissolve PPS.
- It has high strength, high rigidity, and high heat resistance strength.
- It has high incombustibility that meets V-0 of UL 94.
- The properties and precautions of plastic screws  
→ P.xxxx

● Application

FPD production equipment / Semiconductor devices / Printed circuit board etching devices / Metallic surface treatment equipment and facilities / Chemical plants / Transformers / Electrical and electronic equipment / Hot water pumps / Chemical pumps

Unit : mm

Part Number	M (Coarse)		L <sup>2</sup>								D1	L1	Cross-recessed Socket Number	Tension*1 Rupture Load (N)	Torsional*1 Torque (N·m)	Mass (g)	Qty per pack		
	Nominal of Thread <sup>1</sup>	Pitch	4	5	6	8	10	12	15	20								25	30
<b>SPS-M2-P</b>	M2	0.4											3.5	1.3	1	217	0.084	0.03 - 0.062	20
<b>SPS-M3-P</b>	M3	0.5											5.5	2	2	558	0.29	0.1 - 0.32	20
<b>SPS-M4-P</b>	M4	0.7											7	2.6	2	966	0.69	0.22 - 0.61	20
<b>SPS-M5-P</b>	M5	0.8											9	3.3	2	1548	1.23	0.47 - 1	10
<b>SPS-M6-P</b>	M6	1											10.5	3.9	3	2028	2.05	0.83 - 1.4	10

\*1: Values in chart are for reference only. They are not guaranteed values. The recommendation torque is 50% of the torsional torque.

● When purchasing less volume than one full bag, a separate handling fee is charged. For details, see the Sold Separately Service.

● Part number specification

## SPS - M5 - 20 - P

Product Code	<sup>1</sup>	<sup>2</sup>	Product Code
--------------	--------------	--------------	--------------

Individual Sales → P.xxxx	Cleanroom Wash & Packaging → P.xxxx	Screw Length Adjustment → P.xxxx	Vibration Resistant → P.xxxx	Modification process for captive use → P.xxxx
Available / Add'l charge	Available / Add'l charge	Available / Add'l charge	Not Available	Not Available