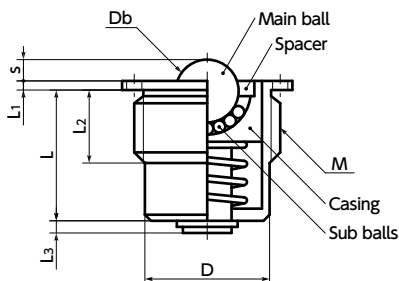
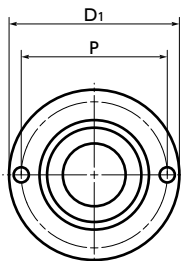


BRPMS-S Ball Rollers with Spring Plunger Function

SUS Stainless steel



● Application

Conveyance / Fixing and locating work / Torque limiting / Indexing

● Material/Finish

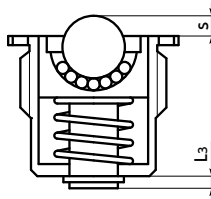


BRPMS-S	
Main Body	SUS304
Main Ball	SUS440C (Hardness: 55HRC or Higher)
Sub Ball	SUS440C (Hardness: 55HRC or Higher)
Spacer	SUS304
Casing	SUS304
Spring	SUS631J1

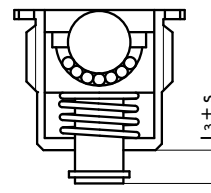
- Ball roller with plunger function. Flange type.
- Mounting height is easily determined.
- Use a dedicated wrench **BRW** for mounting and removing.
- The internal springs receive loads evenly even when the load is unbalanced.
- These can also be used as a general spring plunger with ball for fixing and locating workpieces. The smooth rotation of the ball reduces friction between the main ball and receiving side.

⚠️ Precautions for Use

- These are for upward applications only. If used for downward and sideward applications, the product may be damaged or the ball may malfunction.
- The bottom section moves the stroke distance of the main ball. Take care with the depth of the attachment hole.



Initial condition



Main ball
At max. stroke

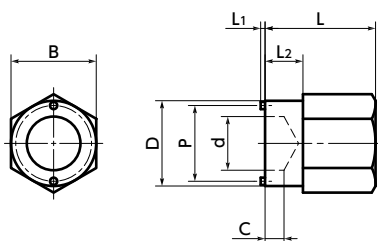
Unit : mm

Part Number	M (Fine)		L	s	L1	L2	L3	D1	D	Db	P	Applicable Wrench	Load (N) Min./Max.	Mass (g)
	Nominal of Thread	Pitch												
BRPMS-16-S	M16	1.5	14	1.5	1.5	9	1.5	19	13.5	5.56	15.4	BRW-10	23 / 30	18
BRPMS-20-S	M20	1.5	17	2.5	1.5	10	2	24	16.5	8.73	18.5	BRW-12	24 / 38	30
BRPMS-24-S	M24	1.5	21.5	3.5	1.5	12	2	28	20.5	10.32	24	BRW-16	24 / 55	54

● Dedicated Wrench

Unit : mm

Part Number	L	L1	L2	B	C	D	d	P	Mass (g)
BRW-10	25	1.4	8	19	3	18.5	10	15.4	55
BRW-12	30	1.4	10	24	4	22	12	18.5	102
BRW-16	35	1.4	12	27	6	27	17	24	153
BRW-20	40	1.4	14	30	7	33	20	29.6	220



● Part number specification

BRPMS-20-S

Product Code: M Stainless Steel Main Ball

Individual Sales → P.xxxx	Cleanroom Wash & Packaging → P.xxxx	Screw Length Adjustment → P.xxxx	Vibration Resistant → P.xxxx
1 piece in 1 pack	Please feel free to contact us	Not Available	Not Available