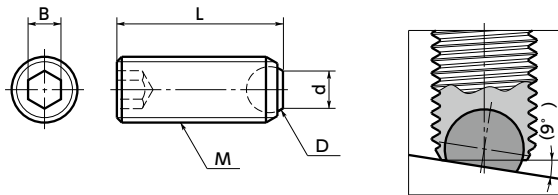


SCS-F / SCSS-F Clamping Screw - Flat Ball



SUS Stainless steel



Material/Finish



	SCS-F Made of Steel	SCSS-F Made of Stainless Steel
Thread	SCM435	SUSXM7
Part	Ferrosoferric Oxide Film (Black)	SUSXM7
Ball	SUJ2 (hardness: 55 - 60 HRC)	SUS440C (hardness: 55 - 60 HRC)

Part number specification

SCSS-M6-25-F



- Surface contact by a flat ball. This does not scratch the work.
- The ball rotates flexibly. It securely clamps even when the mating part is tilted.
- For tool holder set screw, pressure piece and stopper.
- We also produce products of special specifications, e.g. nominal diameter of thread, length and surface treatment. Please feel free to contact our customer service.

Unit : mm

Part Number Steel	Allowable load (N)	Part Number Stainless steel	Allowable load (N)	M (Coarse)		L	D	d	B	Mass (g)
				Nominal of Thread	Pitch					
SCS-M4-6-F	3500	SCSS-M4-6-F	2040	M4	0.7	6	2.5	2	2	0.4
SCS-M4-10-F	3500	SCSS-M4-10-F	2040	M4	0.7	10	2.5	2	2	0.7
SCS-M4-16-F	3500	SCSS-M4-16-F	2040	M4	0.7	16	2.5	2	2	1
SCS-M5-8-F	5000	SCSS-M5-8-F	3000	M5	0.8	8	3	2.5	2.5	0.8
SCS-M5-12-F	5000	SCSS-M5-12-F	3000	M5	0.8	12	3	2.5	2.5	1.3
SCS-M5-20-F	5000	SCSS-M5-20-F	3000	M5	0.8	20	3	2.5	2.5	2.3
SCS-M6-10-F	9000	SCSS-M6-10-F	4500	M6	1	10	4	3.2	3	1.5
SCS-M6-16-F	9000	SCSS-M6-16-F	4500	M6	1	16	4	3.2	3	2.5
SCS-M6-20-F	9000	SCSS-M6-20-F	4500	M6	1	20	4	3.2	3	3.4
SCS-M6-25-F	9000	SCSS-M6-25-F	4500	M6	1	25	4	3.2	3	4
SCS-M8-10-F	15000	SCSS-M8-10-F	9000	M8	1.25	10	5.5	4.5	4	2.5
SCS-M8-12-F	15000	SCSS-M8-12-F	9000	M8	1.25	12	5.5	4.5	4	3.2
SCS-M8-20-F	15000	SCSS-M8-20-F	9000	M8	1.25	20	5.5	4.5	4	5.7
SCS-M8-25-F	15000	SCSS-M8-25-F	9000	M8	1.25	25	5.5	4.5	4	7.7
SCS-M8-30-F	15000	SCSS-M8-30-F	9000	M8	1.25	30	5.5	4.5	4	9
SCS-M10-12-F	24000	SCSS-M10-12-F	14400	M10	1.5	12	7	6	5	5
SCS-M10-16-F	24000	SCSS-M10-16-F	14400	M10	1.5	16	7	6	5	7
SCS-M10-20-F	24000	SCSS-M10-20-F	14400	M10	1.5	20	7	6	5	9.5
SCS-M10-25-F	24000	SCSS-M10-25-F	14400	M10	1.5	25	7	6	5	11
SCS-M10-35-F	24000	SCSS-M10-35-F	14400	M10	1.5	35	7	6	5	16
SCS-M12-16-F	30000	SCSS-M12-16-F	18000	M12	1.75	16	8.5	7.2	6	10
SCS-M12-20-F	30000	SCSS-M12-20-F	18000	M12	1.75	20	8.5	7.2	6	12.5
SCS-M12-30-F	30000	SCSS-M12-30-F	18000	M12	1.75	30	8.5	7.2	6	20
SCS-M12-40-F	30000	SCSS-M12-40-F	18000	M12	1.75	40	8.5	7.2	6	28
SCS-M16-20-F	73000	SCSS-M16-20-F	43800	M16	2	20	12	10.7	8	22
SCS-M16-25-F	73000	SCSS-M16-25-F	43800	M16	2	25	12	10.7	8	28
SCS-M16-35-F	73000	SCSS-M16-35-F	43800	M16	2	35	12	10.7	8	41
SCS-M16-50-F	73000	SCSS-M16-50-F	43800	M16	2	50	12	10.7	8	48

*: **SCS-M8-10-F** **SCS-M10-12-F** **SCS-M12-16-F** **SCS-M16-20-F** **SCSS-M8-10-F** **SCSS-M10-12-F** **SCSS-M12-16-F** **SCSS-M16-20-F** has a shallow Hex Socket hole depth.

Cleanroom Wash & Packaging	Screw Combination	Screw Length Adjustment	Vibration Resistant
Please feel free to contact us	Available / Add'l charge	Not Available	Available / Add'l charge