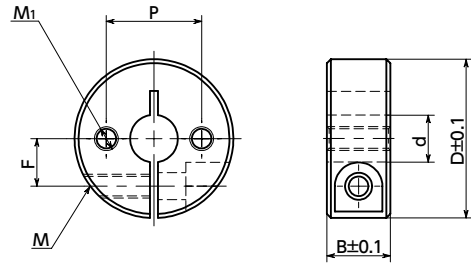


NSCS-SN2 Set Collars with Mounting Hole (Female Screw) - Stainless Steel - Clamping Type

SUS Stainless steel



- Set collars with mounting hole (female screw). Can be mounted to any machine or device, such as wheels, flanges and plates, by using the mounting hole (female screw).
- Clamping type. Mounting and removal are easy, with no damage to the shaft.
- Optimal for machines and devices where mounting/removal is frequent, e.g. slide shafts.

• Material/Finish



	NSCS-SN2
Main Body	SUS304
Hex Socket Head Cap Screw	SUSXM7



Unit : mm

Part Number	d	B	D	F	P	M (Coarse)*1	M1 (Coarse)*2		Mass (g)
							Nominal of Thread	Pitch	
NSCS-6-8-SN2	6	8	20	6	12	M3	M3	0.5	16
NSCS-6-10-SN2	6	10	20	6	13	M3	M4	0.5	20
NSCS-8-8-SN2	8	8	25	8	14	M3	M3	0.5	24
NSCS-8-10-SN2	8	10	25	8	18	M4	M4	0.7	30
NSCS-8-12-SN2	8	12	28	8.5	18	M5	M5	0.8	46
NSCS-8-15-SN2	8	15	30	9.5	20	M5	M6	0.8	67
NSCS-10-10-SN2	10	10	30	9	20	M5	M4	0.8	42
NSCS-10-12-SN2	10	12	30	9	20	M5	M5	0.8	48
NSCS-10-15-SN2	10	15	35	10	24	M6	M6	1.0	90
NSCS-12-10-SN2	12	10	30	10	22	M5	M4	0.8	42
NSCS-12-12-SN2	12	12	30	10	22	M5	M5	0.8	50
NSCS-12-15-SN2	12	15	35	11	24	M6	M6	1.0	86
NSCS-13-10-SN2	13	10	30	10	22	M4	M4	0.7	40
NSCS-13-15-SN2	13	15	35	11	24	M6	M6	1.0	83
NSCS-15-10-SN2	15	10	32	11	23	M4	M4	0.7	45
NSCS-15-12-SN2	15	12	35	12	26	M5	M5	0.8	66
NSCS-15-15-SN2	15	15	40	13	28	M6	M6	1.0	113
NSCS-16-10-SN2	16	10	35	12	24	M4	M4	0.7	54
NSCS-16-12-SN2	16	12	35	12	26	M5	M5	0.8	65
NSCS-16-15-SN2	16	15	40	13	28	M6	M6	1.0	110
NSCS-20-10-SN2	20	10	40	14	28	M4	M4	0.7	68
NSCS-20-12-SN2	20	12	40	14	30	M5	M5	0.8	80
NSCS-20-15-SN2	20	15	45	15	34	M6	M6	1.0	134
NSCS-25-12-SN2	25	12	45	17	36	M5	M5	0.8	94
NSCS-25-15-SN2	25	15	50	18	38	M6	M6	1.0	158
NSCS-30-15-SN2	30	15	55	20	44	M6	M6	1.0	180
NSCS-35-15-SN2	35	15	60	23	48	M6	M6	1.0	202
NSCS-40-18-SN2	40	18	70	26	56	M8	M8	1.25	337
NSCS-50-22-SN2	50	22	85	32	68	M10	M10	1.5	589

*1 : Hex socket head cap screw for tightening is provided.

*2 : Mounting screws are not supplied. The customer is asked to prepare them.

Cleanroom Wash & Packaging	Screw Length Adjustment	Vibration Resistant	Laser Marking
Please feel free to contact us	Not Available	Not Available	Available / Add'l charge

• Part Number Specification

NSCS-6-8-SN2

