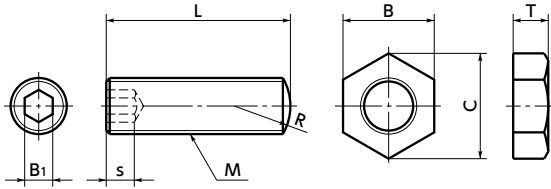


SAN-B / SANS-B Stopper Screw



SUS Stainless steel



Part number specification

SAN-M5-20-B

Product Code **1** **2** Type with Hex Socket

- Fine threaded type stopper screw. Fine adjustment is easy.
- For work locating and stopping.
- Round area has already been quenched. It is highly abrasion-resistant.
- All products are provided with lock nut.
- Material/Finish



	SAN-B Made of Steel	SANS-B Made of Stainless Steel
Thread Part	S45C Sphere part quenching (hardness: 45 - 50 HRC) Trivalent Chromate Treatment	SUS420J2 Sphere part quenching (hardness: 40 - 50 HRC)
Lock Nut	Steel Trivalent Chromate Treatment	Equivalent to SUS304

Dimensions

Unit : mm

Part Number Steel	Part Number Stainless steel	M(Fine)		s min.	B ₁	R	B	C	T	Mass (g)
		Nominal of Thread	Pitch							
SAN-M4-B	SANS-M4-B	M4	0.5	2.2	2	4	7	8.1	4	2.3 - 3.2
SAN-M5-B	SANS-M5-B	M5	0.5	2.8	2.5	5	8	9.2	4	3.1 - 4.6
SAN-M6-B	SANS-M6-B	M6	0.75	3	3	6	10	11.5	4	4.5 - 13
SAN-M8-B	SANS-M8-B	M8	0.75	4	4	8	13	15	5	9.7 - 23
SAN-M10-B	SANS-M10-B	M10	1	5	5	10	17	19.6	6	23 - 35
SAN-M12-B	SANS-M12-B	M12	1	6	6	12	19	21.9	6	37 - 68
SAN-M16-B	SANS-M16-B	M16	1.5	7	8	16	24	27.7	8	90 - 150

SAN-B Made of Steel **SANS-B** Made of Stainless Steel

Part Number	L (mm) 2									
	20	25	30	35	40	50	60	80	100	
SAN-M4-B	●		●							
SAN-M5-B	●		●							
SAN-M6-B	●		●	●	●	●	●			
SAN-M8-B		●	●		●	●	●			
SAN-M10-B					●	●	●			
SAN-M12-B					●		●	●		
SAN-M16-B							●	●	●	
SANS-M4-B	●		●							
SANS-M5-B	●		●							
SANS-M6-B	●		●	●	●	●	●			
SANS-M8-B		●	●		●	●	●			
SANS-M10-B					●	●	●			
SANS-M12-B					●		●	●		
SANS-M16-B							●	●	●	

Cleanroom Wash & Packaging → P.0000
 Screw Combination → P.0000
 Screw Length Adjustment → P.0000
 Vibration Resistant → P.0000

Please feel free to contact us | Not Available | Not Available | Available / Add'l charge