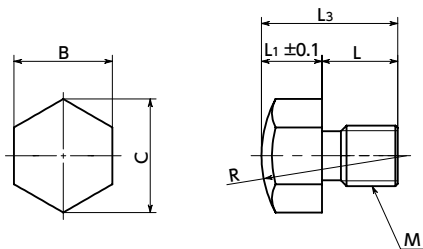


# SPML-B Rounded Head Stopper Bolts - Stainless Steel SUS316L



SUS Stainless steel



## ● Material/Finish



	<b>SPML-B</b>
Main Body	SUS316L

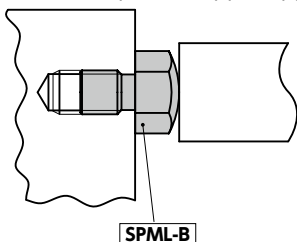
- For workpiece stopper applications.
- The bolt features a rounded hexagonal head.
- Made of SUS316L. It has excellent corrosion resistance.

Unit : mm

Part Number 	M (Coarse)		L3	L1	L	B	C (Approx.)	R	Mass (g)
	Nominal of Thread	Pitch							
<b>SPML-M5-B</b>	M5	0.8	10.5	3.5	7	8	9.2	10	2.2
<b>SPML-M6-B</b>	M6	1	12	4	8	10	11.5	12	3.7
<b>SPML-M8-B</b>	M8	1.25	15	5	10	13	15	16	8
<b>SPML-M10-B</b>	M10	1.5	20	6	14	17	19.6	22	17
<b>SPML-M12-B</b>	M12	1.75	23	7	16	19	21.9	25	26.3

## ● Usage Example

For workpiece stopper applications.



## ● Part Number Specification

**SPML-M10-B**



Cleanroom Wash & Packaging Please feel free to contact us	Screw Combination Not Available	Screw Length Adjustment Not Available	Vibration Resistant Available / Add'l charge
--	------------------------------------	--	---