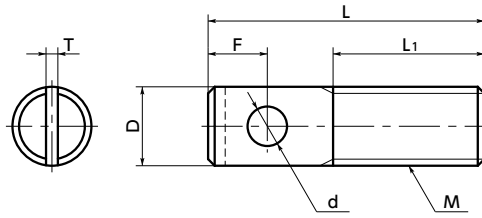
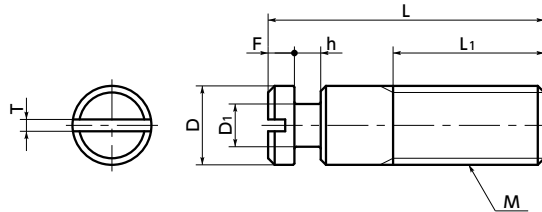


SPOS-A



SPOS-B



- Post for tensile coil spring.
- There are bore type and groove type. ◀ 3

SPOS-A — Bore type
SPOS-B — Groove type

- Material/Finish



	SPOS
Main body	SUS303

SPOS-A Bore type

Unit : mm

Part Number	M (Coarse)		L ◀ 2	L1	D	F	d	T	Mass (g)
	Nominal of Thread ◀ 1	Pitch							
SPOS-M3-10-A	M3	0.5	10	5	3	3	1.5	1.2	0.6
SPOS-M3-15-A	M3	0.5	15	10	3	3	1.5	1.2	0.9
SPOS-M4-15-A	M4	0.7	15	10	4	3	2	1.2	1.5
SPOS-M4-20-A	M4	0.7	20	10	4	3	2	1.2	2
SPOS-M4-25-A	M4	0.7	25	10	4	3	2	1.2	2.5
SPOS-M5-20-A	M5	0.8	20	10	5	5	2	1.2	3.5
SPOS-M5-25-A	M5	0.8	25	10	5	5	2	1.2	4
SPOS-M5-30-A	M5	0.8	30	10	5	5	2	1.2	4.5
SPOS-M6-25-A	M6	1	25	16	6	5	2	1.2	6.8
SPOS-M6-30-A	M6	1	30	16	6	5	2	1.2	7.4
SPOS-M6-40-A	M6	1	40	16	6	5	2	1.2	8

SPOS-B Groove type

Unit : mm

Part Number	M (Coarse)		L ◀ 2	L1	D	D1	F	h	T	Mass (g)
	Nominal of Thread ◀ 1	Pitch								
SPOS-M3-15-B	M3	0.5	15	10	3	1.8	3	1	1.2	0.8
SPOS-M3-20-B	M3	0.5	20	10	3	1.8	3	1	1.2	1.1
SPOS-M3-25-B	M3	0.5	25	10	3	1.8	3	1	1.2	1.4
SPOS-M3-30-B	M3	0.5	30	10	3	1.8	3	1	1.2	1.6
SPOS-M3-35-B	M3	0.5	35	10	3	1.8	3	1	1.2	1.9
SPOS-M4-15-B	M4	0.7	15	10	4	2	3	1.2	1.2	1.5
SPOS-M4-20-B	M4	0.7	20	10	4	2	3	1.2	1.2	1.8
SPOS-M4-25-B	M4	0.7	25	10	4	2	3	1.2	1.2	2.1
SPOS-M4-30-B	M4	0.7	30	10	4	2	3	1.2	1.2	2.4
SPOS-M4-35-B	M4	0.7	35	10	4	2	3	1.2	1.2	2.7
SPOS-M4-40-B	M4	0.7	40	10	4	2	3	1.2	1.2	3
SPOS-M5-15-B	M5	0.8	15	8	5	3	4	2	1.2	3
SPOS-M5-20-B	M5	0.8	20	10	5	3	4	2	1.2	3.5
SPOS-M5-25-B	M5	0.8	25	10	5	3	4	2	1.2	3.8
SPOS-M5-30-B	M5	0.8	30	10	5	3	4	2	1.2	4
SPOS-M5-35-B	M5	0.8	35	10	5	3	4	2	1.2	4.3
SPOS-M5-40-B	M5	0.8	40	10	5	3	4	2	1.2	4.5
SPOS-M6-15-B	M6	1	15	7	6	3.6	4	3	1.2	3.2
SPOS-M6-20-B	M6	1	20	12	6	3.6	4	3	1.2	5
SPOS-M6-25-B	M6	1	25	16	6	3.6	4	3	1.2	6.8
SPOS-M6-30-B	M6	1	30	16	6	3.6	4	3	1.2	7
SPOS-M6-35-B	M6	1	35	16	6	3.6	4	3	1.2	7.1
SPOS-M6-40-B	M6	1	40	16	6	3.6	4	3	1.2	7.3
SPOS-M6-45-B	M6	1	45	16	6	3.6	4	3	1.2	7.5
SPOS-M6-50-B	M6	1	50	16	6	3.6	4	3	1.2	7.7
SPOS-M6-60-B	M6	1	60	16	6	3.6	4	3	1.2	8
SPOS-M8-20-B	M8	1.25	20	11	8	5	4	3	1.2	13
SPOS-M8-25-B	M8	1.25	25	16	8	5	4	3	1.2	14
SPOS-M8-30-B	M8	1.25	30	20	8	5	4	3	1.2	15
SPOS-M8-35-B	M8	1.25	35	20	8	5	4	3	1.2	15.7
SPOS-M8-40-B	M8	1.25	40	20	8	5	4	3	1.2	16.3
SPOS-M8-45-B	M8	1.25	45	20	8	5	4	3	1.2	17
SPOS-M8-50-B	M8	1.25	50	20	8	5	4	3	1.2	17.7
SPOS-M8-60-B	M8	1.25	60	20	8	5	4	3	1.2	19
SPOS-M10-35-B	M10	1.5	35	22	10	6	4	3	1.2	23
SPOS-M10-40-B	M10	1.5	40	25	10	6	4	3	1.2	24
SPOS-M10-45-B	M10	1.5	45	25	10	6	4	3	1.2	26.8
SPOS-M10-50-B	M10	1.5	50	25	10	6	4	3	1.2	29.5
SPOS-M10-60-B	M10	1.5	60	25	10	6	4	3	1.2	35
SPOS-M12-50-B	M12	1.75	50	30	12	6.5	4	4	1.8	42
SPOS-M12-60-B	M12	1.75	60	30	12	6.5	4	4	1.8	50.5
SPOS-M12-70-B	M12	1.75	70	30	12	6.5	4	4	1.8	59

- Part number specification

SPOS-M6-30-A
Product Code ◀ 1 ◀ 2 ◀ 3

Cleanroom Wash & Packaging → P.xxxx	Screw Length Adjustment → P.xxxx	Vibration Resistant → P.xxxx	Laser Marking → P.xxxx
Please feel free to contact us	Available / Add'l charge	Available / Add'l charge	Not Available