

- Wide variations from roller chain nominal diameter No. 11 through 100.
- Right thread or left thread can be selected according to the end symbol of the part number. **3**

SRC-R — Right thread

SRC-L — Left thread

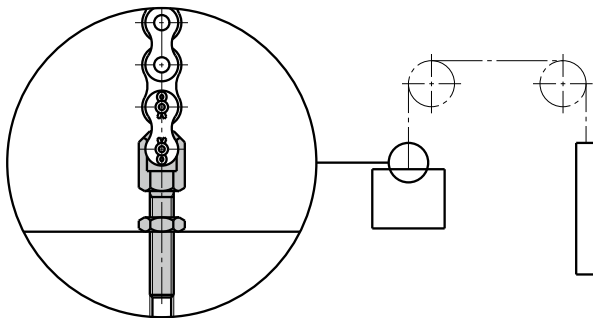
- All products are provided with hexagon nuts (3 types).
- For linkage with a roller chain, a roller chain joint link or offset link is required.

• Material/Finish



	SRC
Main body	S45C (hardness: 35 - 40 HRC) Ferrosferic Oxide Film (Black)
Nut	SS400 Ferrosferic Oxide Film (Black)

- Usage example
For balance weight connection.



- ⚠** Precautions for Use
- If a roller chain bolt is used for a suspension device, implement safety measures to keep people off from beneath the device.
 - Roller chain bolts are consumables. Regular inspection and replacement are necessary.
 - The max. loads indicated in the dimension table are tensile values.

• Related Products

Use a turn buckle **STR** **STB** for chain tension adjustment.

STR **STB**



• Part number specification

SRC-25-18-L

Product Code **1** **2** **3**

SRC-R Right thread **SRC-L** Left thread

Unit : mm

Part Number	Applicable Roller Chain Nominal Number 1	E 2	M (Coarse)		L ₁	L	F	d	B ₁	B ₂	H ₁	Max. load (N)	Mass (g)
			Nominal of Thread	Pitch									
SRC-11-10-R	11	10	M2.5	0.45	9.1	17.2	1.8	1.7	2.4	5	1.6	300	1.8
SRC-11-15-R	11	15	M2.5	0.45	14.1	22.2	1.8	1.7	2.4	5	1.6	300	2
SRC-11-20-R	11	20	M2.5	0.45	19.1	27.2	1.8	1.7	2.4	5	1.6	300	2.2
SRC-15-12-R	15	12	M3	0.5	10	20.6	2.2	1.7	3.4	6	1.8	440	2.8
SRC-15-18-R	15	18	M3	0.5	16	26.6	2.2	1.7	3.4	6	1.8	440	3.1
SRC-15-25-R	15	25	M3	0.5	23	33.6	2.2	1.7	3.4	6	1.8	440	3.5
SRC-25-18-R	25	18	M4	0.7	16.5	28.2	3	2.4	4.8	7	2.4	780	5
SRC-25-25-R	25	25	M4	0.7	23.5	35.2	3	2.4	4.8	7	2.4	780	6
SRC-25-40-R	25	40	M4	0.7	38.5	50.2	3	2.4	4.8	7	2.4	780	7
SRC-35-25-R	35	25	M6	1	23.5	40	4.5	3.7	7.4	10	3.6	1960	12
SRC-35-32-R	35	32	M6	1	30.5	47	4.5	3.7	7.4	10	3.6	1960	14
SRC-35-55-R	35	55	M6	1	53.5	70	4.5	3.7	7.4	10	3.6	1960	18
SRC-40-33-R	40	33	M8	1.25	31	52.5	6	4	11.2	13	5	3530	30
SRC-40-40-R	40	40	M8	1.25	38	59.5	6	4	11.2	13	5	3530	33
SRC-40-70-R	40	70	M8	1.25	68	89.5	6	4	11.2	13	5	3530	44
SRC-50-41-R	50	41	M10	1.5	39	65	7.5	5.2	13.8	17	6	5680	60
SRC-50-50-R	50	50	M10	1.5	48	74	7.5	5.2	13.8	17	6	5680	66
SRC-50-75-R	50	75	M10	1.5	73	99	7.5	5.2	13.8	17	6	5680	80
SRC-60-49-R	60	49	M12	1.75	47	78	9	6	17.8	19	7	8230	100
SRC-60-63-R	60	63	M12	1.75	61	92	9	6	17.8	19	7	8230	120
SRC-60-100-R	60	100	M12	1.75	98	129	9	6	17.8	19	7	8230	150
SRC-80-60-R	80	60	M16	2	57	98	12	8	22.6	24	10	15400	210
SRC-80-80-R	80	80	M16	2	77	118	12	8	22.6	24	10	15400	240
SRC-80-115-R	80	115	M16	2	112	153	12	8	22.6	24	10	15400	300
SRC-100-70-R	100	70	M20	2.5	65	117	15	9.6	27.5	30	12	23900	440
SRC-100-100-R	100	100	M20	2.5	95	147	15	9.6	27.5	30	12	23900	520
SRC-100-145-R	100	145	M20	2.5	140	192	15	9.6	27.5	30	12	23900	630
SRC-11-10-L	11	10	M2.5	0.45	9.1	17.2	1.8	1.7	2.4	5	1.6	300	1.8
SRC-15-12-L	15	12	M3	0.5	10	20.6	2.2	1.7	3.4	6	1.8	440	2.8
SRC-25-18-L	25	18	M4	0.7	16.5	28.2	3	2.4	4.8	7	2.4	780	5
SRC-35-25-L	35	25	M6	1	23.5	40	4.5	3.7	7.4	10	3.6	1960	12
SRC-40-33-L	40	33	M8	1.25	31	52.5	6	4	11.2	13	5	3530	30
SRC-50-41-L	50	41	M10	1.5	39	65	7.5	5.2	13.8	17	6	5680	60
SRC-60-49-L	60	49	M12	1.75	47	78	9	6	17.8	19	7	8230	100
SRC-80-60-L	80	60	M16	2	57	98	12	8	22.6	24	10	15400	210
SRC-100-70-L	100	70	M20	2.5	65	117	15	9.6	27.5	30	12	23900	440

Cleanroom Wash & Packaging Not Available	Screw Length Adjustment Available / Add'l charge	Vibration Resistant Available / Add'l charge	Laser Marking Not Available
---	---	---	--------------------------------