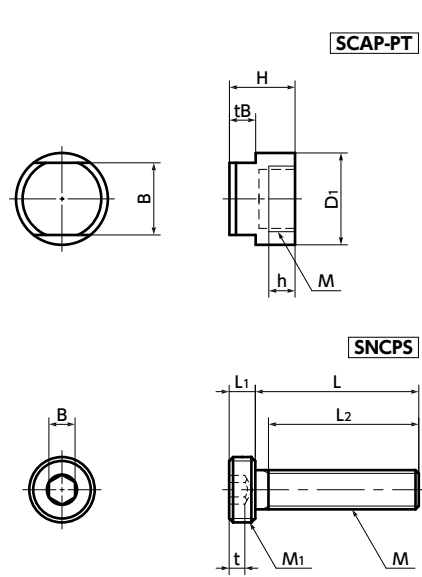


SCAP-PT/SNCPS Cover Caps - PTFE / Socket Head Cap Screws for Cover Caps

SUS Stainless steel Vacuum Cleanroom wash & packaging Chemical-proof



- Combine **SCAP-PT** Cover Caps and **SNCPS** Socket Head Cap Screws for Cover Caps.
 - The PTFE (Polytetrafluoroethylene) cover protects the screw head from corrosion caused by chemicals.
 - PTFE is a plastic with excellent chemical resistance, and most chemicals cannot penetrate it.
 - Chemical Resistance of PTFE → P.xxxx
 - Since the screw portion is stainless steel, they can be used with higher tightening forces than PTFE screws.
 - Tightening with the recommendation torque has a sealing effect and the bearing surface of the cover cap fits the attachment surface tightly. Airtight testing at 0.6 MPa confirmed that there is no leakage.
 - Also, make cover caps from requested materials such as Hastelloy*1 and PEEK are available.
- *1: Hastelloy is a registered trademark of Haynes International, Inc.

Application

FPD production equipment, semiconductor fabrication wet processes, printed circuit board etching devices, metallic surface treatment equipment and facilities, cleaning equipment, and chemical plants

Material/Finish

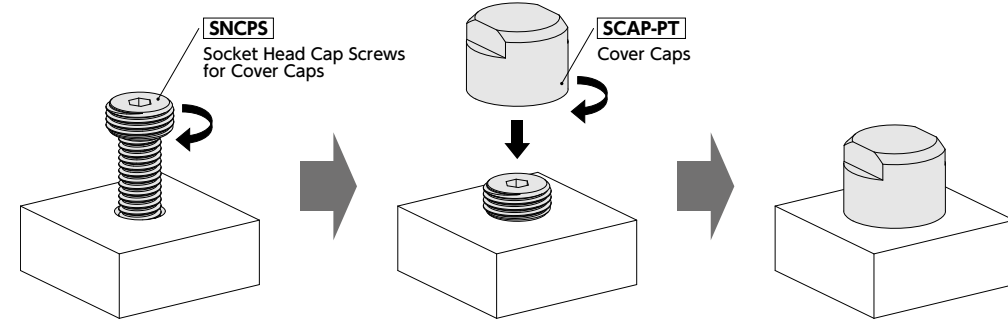
	SCAP-PT Cover Caps	SNCPS Socket Head Cap Screws
Main Body	PTFE (Polytetrafluoroethylene)	SUSXM7 (Equivalent to SUS304)
Strength Class		A2-50

⚠ Precautions for Use
Chemical resistance changes with performance conditions. Always carry out tests under performance conditions similar to actual conditions in advance.

SCAP-PT Cover Caps

Part Number	M (Fine)		H	D1	h	B	tB	Recommendation Torque (N·m)	SNCPS Part.No	Mass (g)
	Nominal of Thread	Pitch								
SCAP-3-PT	M5	0.5	6	9	2	7	3	0.04	SNCPS-M3	0.65
SCAP-4-PT	M6	0.75	8	10	2.8	8	3	0.08	SNCPS-M4	1.1
SCAP-5-PT	M8	0.75	9	12	3.5	9	3	0.2	SNCPS-M5	1.6
SCAP-6-PT	M10	0.75	10	14	4	11	4	0.35	SNCPS-M6	2.3
SCAP-8-PT	M12	1	11	16	5	13	4	0.45	SNCPS-M8	3.1
SCAP-10-PT	M16	1	12	20	6	17	4	0.6	SNCPS-M10	4.8

- Usage
After tightening **SNCPS** Socket Head Cap Screw for Cover Cap, attach **SCAP-PT** Cover Cap so that it covers the head of **SNCPS**.
Ensure that the tightening torque of **SCAP-PT** does not exceed the recommendation torque in the chart.



SNCPS Socket Head Cap Screws for Cover Caps

Part Number	M (Coarse)		L							M1 (Fine)		L1	B	t	L2*1	SCAP-PT Part.No	Mass (g)					
	Nominal of Thread	Pitch	6	8	10	12	16	20	25	30	35							Nominal of Thread	Pitch			
SNCPS-M3	M3	0.5	6	8	10	12						M3	0.5	2	2	1.5	Full Thread	SCAP-3	0.53 - 0.78			
SNCPS-M4	M4	0.7		8	10	12	16					M4	0.7	2.8	2.5	2.3	Full Thread	SCAP-4	1.3 - 1.9			
SNCPS-M5	M5	0.8			10	12	16	20				M5	0.8	3.5	3	2.7	Full Thread	SCAP-5	2 - 3.3			
SNCPS-M6	M6	1				12	16	20	25			M6	1	4	4	3	Full Thread	SCAP-6	3.8 - 6.4			
SNCPS-M8	M8	1.25						16	20	25	30	35	M8	1.25	5	5	3.8	22(L=35)	SCAP-8	9 - 16		
SNCPS-M10	M10	1.5								20	25	30	35	40	M10	1.5	6	6	4.5	26(L=40)	SCAP-10	17 - 27

*1: If the "L" value is other than the value in parentheses, the screw is full thread.

Related Products

SCAP-AL aluminum alloy for use in vacuum chambers are available.
→ P.xxxx



SCAP-CE ceramic cover cap for use in vacuum chambers are available.
→ P.xxxx



Part number specification

SCAP-6-PT **SCAP-PT** Cover Caps

SNCPS-M6-20 **SNCPS** Socket Head Cap Screws for Cover Caps

Batch cleanroom packing is provided for orders containing multiple items of the same size.
Order **SCAP-PT** and **SNCPS** individually.

Individual Sales → P.xxxx Cleanroom Wash & Packaging → P.xxxx Screw Length Adjustment → P.xxxx Vibration Resistant → P.xxxx Modification process for captive use → P.xxxx
1 piece in 1 pack Cleanroom washed and packed S.S. only/ Add'l charge Please feel free to contact us Not Available